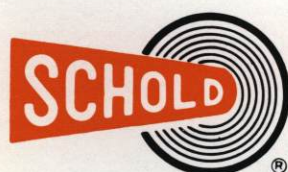




SCHOLD HIGH SPEED DISPERSER

**SALES, TECHNICAL & SAFETY
HOTLINE**

**Midwest Facility 1-800 - 4MIXERS
Southern Facility 1-800 - RGD-MIXR**



SCHOLD
MACHINE CO.

Sales & Technical Hot Line
1-800-247-4347

SOUTHERN DIVISION
(Corporate Headquarters
& Manufacturing)

10590 Oak Street N.E.
St. Petersburg, FL 33716
Tel: 813-576-1147 or 576-1132

MIDWEST DIVISION
(Manufacturing)

7201 West 64th Place
Chicago, IL 60638-4692
Tel: 312-458-3788 or 458-3793

**SCHOLD RESEARCH &
DEVELOPMENT, INC.**

Tel: 813-576-1132
312-458-3793

VMD

VMD 500/600

Wide Range High Speed Dispersers

Schold 500 and 600 Series VMD Dispersers ... 25 through 60 HP ... are designed to handle a wide range of production jobs common to the coating, ink, adhesive and chemical industries ... as well as other processors who find it more efficient to "let down" and finish batch production at one disperser without rehandling to another blender.

Standard features include a stainless steel shaft, swivel head positions, 60" hydraulic rise and two-piece hydraulic cylinder for ease of maintenance with wide bearing spread.

These units offer a wide speed range ... from 700 to 2800 RPM for maximum flexibility of operation in small to large batches ... and utilize our standard field-proven variable speed drive and rugged upper main frame that have been standard on Schold dispersers for more than 30 years.

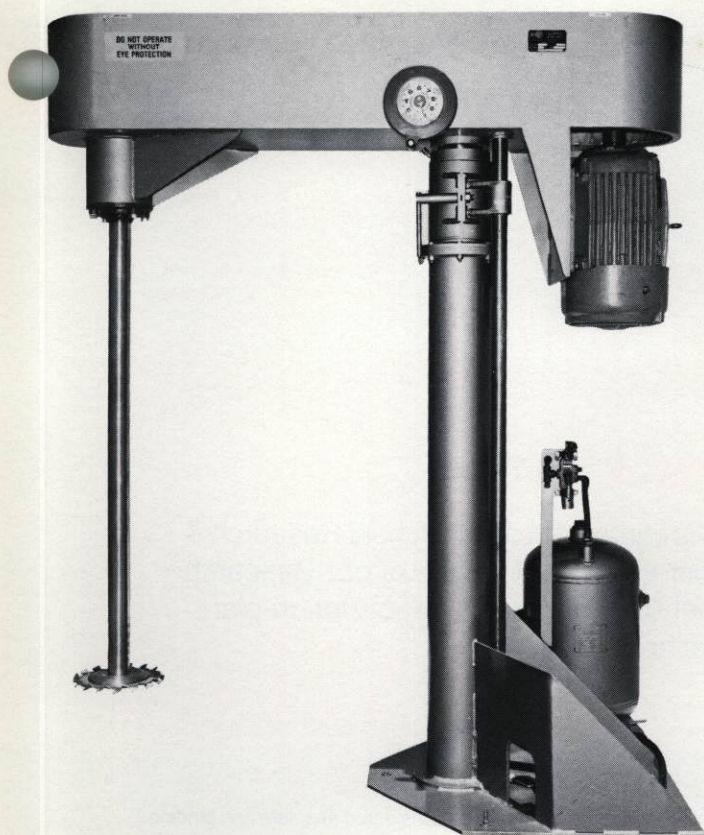
VMD Series dispersers offer the same superior, high-efficiency dispersion mixing characteristics as other Schold products. With a larger base and extended piston rise, VMD dispersers are ideally designed for use with larger diameter, taller, straight side/dished bottom blending vessels.

Other features include a swivel head with clamp for multi-tank operation; large gusseted base and bearing housing for extreme stability under high-speed operation; high-quality brass hand and foot valves with two-action operation for safety; and heavy-duty, high-speed piloted flange bearings with wide bearing spread for longer operating life at high-speed operation.

A 3" OD 304 precision stainless steel shaft and two (2) high-speed, high-shear blades are standard with 8" or 10" diameter clamp and drive flanges. On 40, 50 and 60 HP models, a 3½" OD shaft and double swivel clamp are provided.

Longer life and more dependable performance under the most demanding conditions are your best guarantees of more efficient, trouble-free operation. Schold products have a history of dependability second to none.

VMD Series dispersers are designed to satisfy the needs of nearly every high-speed application. However, Schold engineers can modify existing designs to fit specific needs, or design and build custom equipment for specialized applications.



VMD 500 Series – 25 and 30 HP

Capacity: 300-gallon dispersion; 500-gallon total volume

Speed: Infinitely variable from 700 to 2800 RPM*

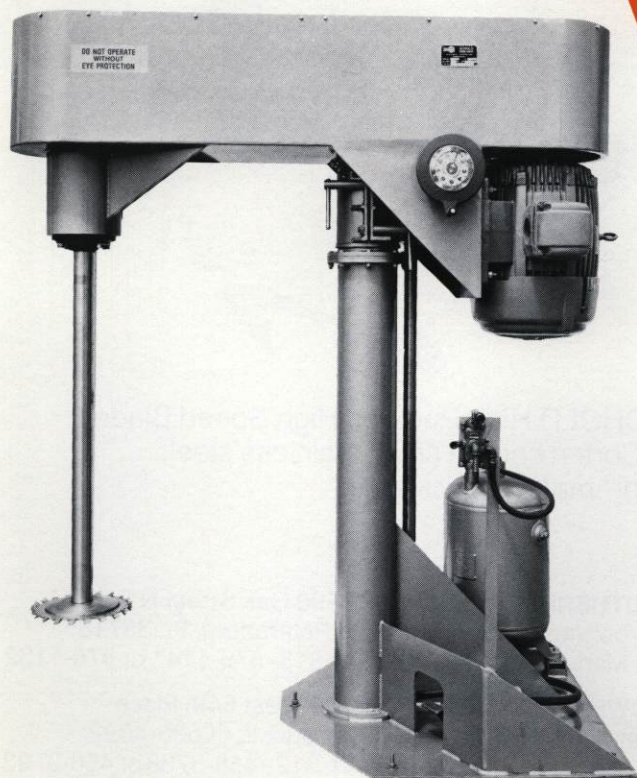
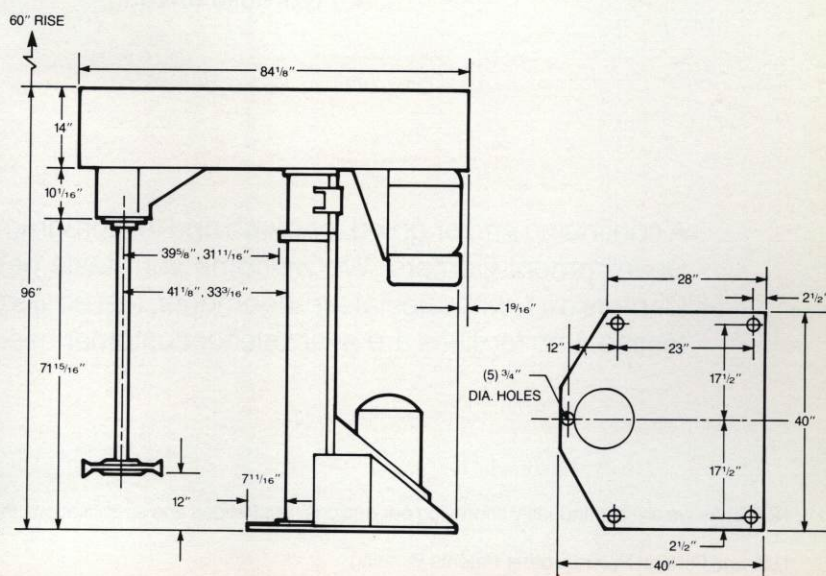
Size:

Power: 230/460 volt, 60 Hz, 3-phase, constant torque, multilabel explosion-proof motor standard

Shaft OD: 3" stainless steel with swivel clamp

Options:

- Hydraulic drive
- Air lock tub holder
- Extended piston rise
- Tank mounted



VMD 600 Series – 40, 50 and 60 HP

Capacity: 500-gallon dispersion

Speed: Infinitely variable from 700 to 2800 RPM*

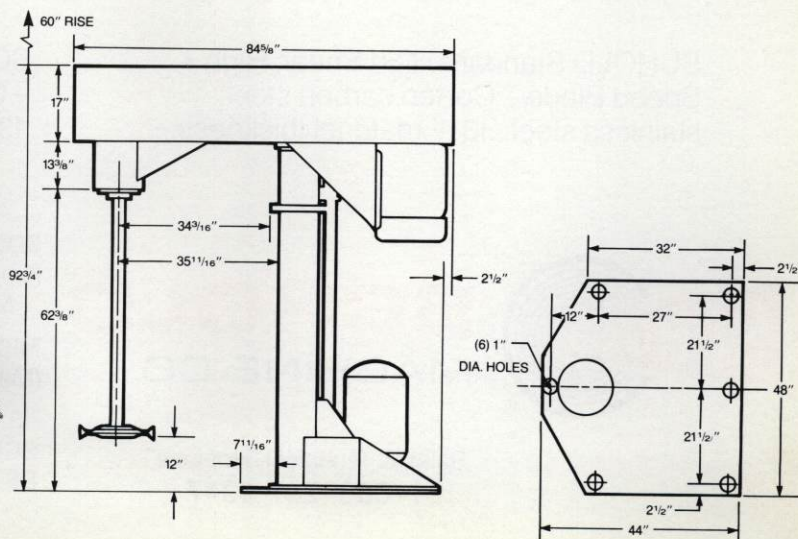
Size:

Power: 230/460 volt, 60 Hz, 3-phase, constant torque, multilabel explosion-proof motor standard

Shaft OD: 3 1/2" stainless steel with double swivel clamp

Options:

- Extended piston rise
- Air lock tub holder
- Multi-position index
- Tank mounted



*NOTE: These units are also available with intermediate shaft (jackshaft) design for slower speeds or special applications.

Other options available:

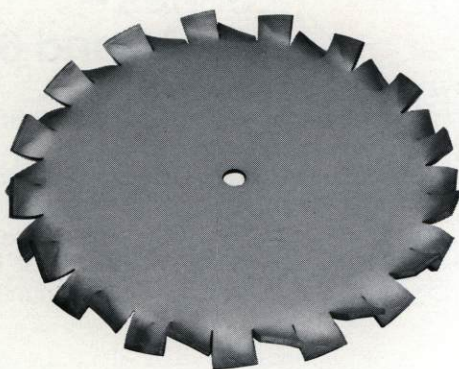
- Special voltages
- Tachometers
- Ammeters
- Tub holders
- Safety switches
- Hydraulic or air vari controls
- Mixing vessels
- Pumps
- Electrical components
- Material handling devices
- Mezzanines, ladders and cat walks
- Special speeds
- Hydraulic drives

Schold Research & Development, Inc.

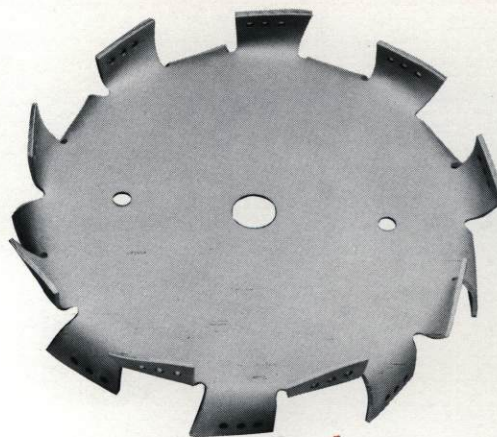
A continuing and ongoing research and test program is carried out at the Schold Research & Development Centers. We welcome your tests of our equipment at one of our Research Centers and, with special arrangements, test equipment can be made available for "in-plant" testing. Lab facilities are available for customer use at no charge.

NOTE: As we are continuously improving our designs, illustrations and specifications in this publication are not to be considered absolute and binding.

U.S. and Foreign Patents; other Patents Pending



SCHOLD Standard High Shear, High Speed Blade – Corten carbon steel; stainless steel; .131" material thickness.



SCHOLD High Pumper, High Speed Blade – Corten carbon steel; stainless steel; .131" material thickness.



SCHOLD
MACHINE CO.

Sales & Technical "Hot Line"
1-800-247-4347

SOUTHERN DIVISION
(Corporate Headquarters
& Manufacturing)

10590 Oak Street N.E.
St. Petersburg, FL 33716
Tel: 813-576-1147 or 576-1132

MIDWEST DIVISION
(Manufacturing)

7201 West 64th Place
Chicago, IL 60638-4692
Tel: 312-458-3788 or 458-3793

**SCHOLD RESEARCH &
DEVELOPMENT, INC.**

Tel: 813-576-1132
312-458-3793